

1

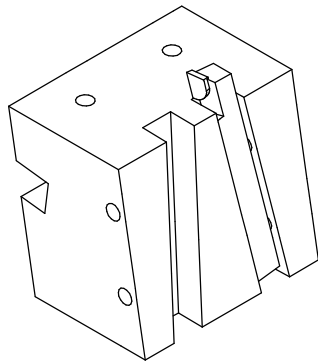
2

3

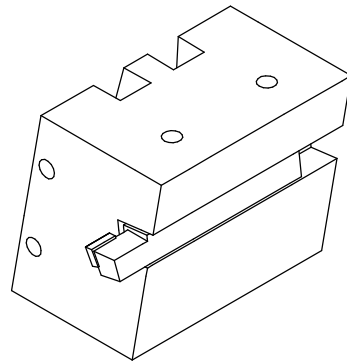
4

A

A



Grinding front clearance and rake



Grinding side rake

B

B

Suggested material: 6061-T6 aluminum

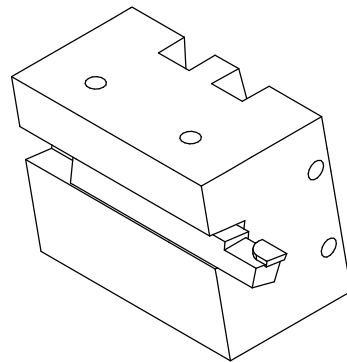
The dimensions shown for the block are nominal.

All slots are .320 wide and .275 deep.

All holes are .5" from the ends of the slots, drilled #21 (.159) and tapped 10-32 for hex socket grub screws to be recessed below the surface.

C

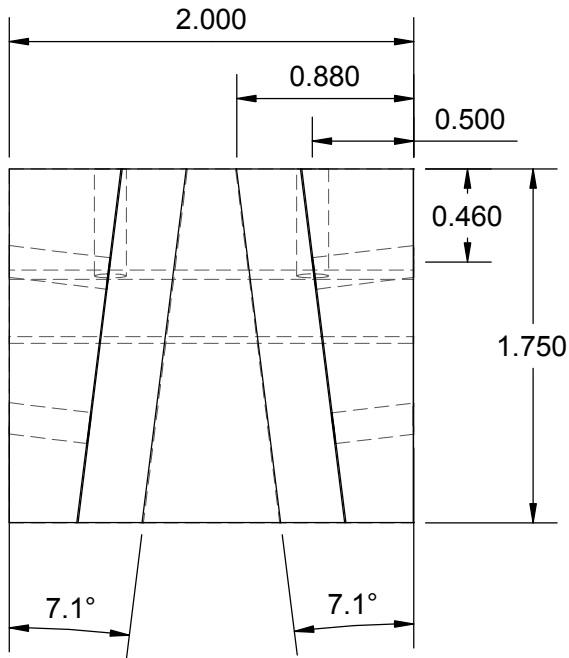
C



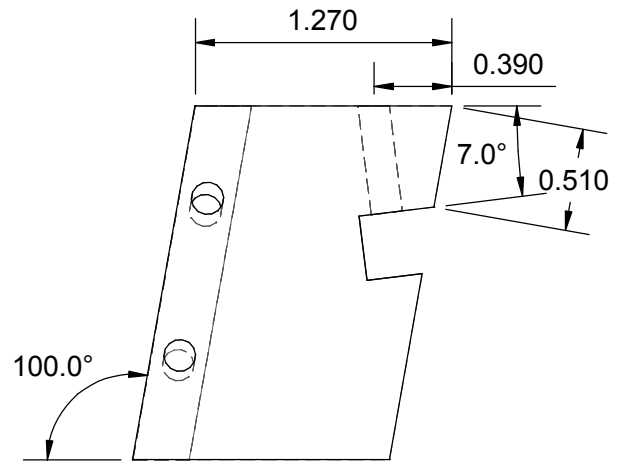
Grinding top rake

D

D



(Both of these angles are 7° when measured flat against the sloping side.)



E

E

Based on a design by Keith Brooke and Brian Finlayson.

David Underwood	
Lathe Tool Sharpening Jig	
Drawn: 2014-11-08	Sheet 1 of 1
Unless otherwise specified, dimensions are in inches.	

1

2

3

4