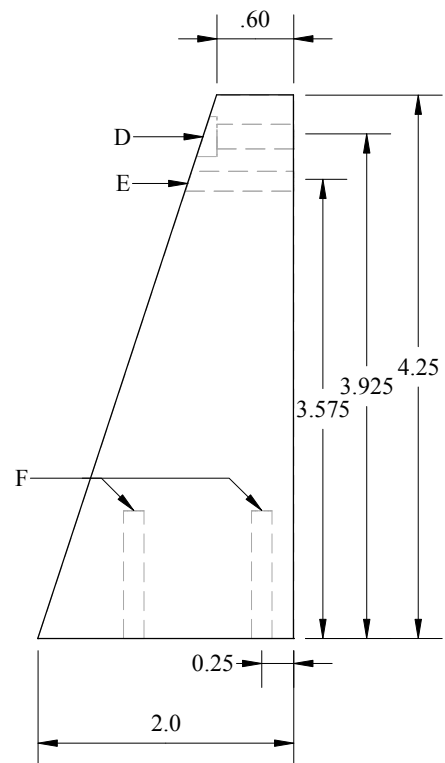
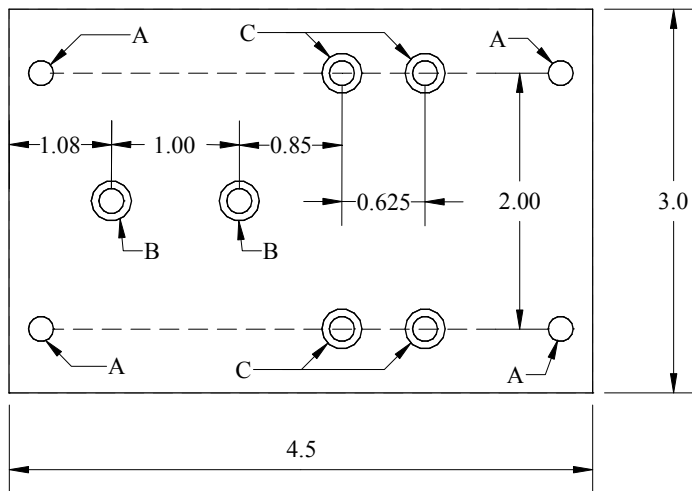


- A - Clearance drill for 10-32 SHCS (#9 - 0.196), to suit mill table T-slots
- B - Clearance drill for 10-32 SHCS (#9 - 0.196) and counterbore 5/16" dia.
- C - Drill and c'bore as for B, spaced to match the rotary table holes
- D - Drill and c'bore as for B, height to match threaded hole on rotary table
- E - Tap for 10-32 grub screw (#21 - 0.159), height to match land on rotary table
- F - Tap for 10-32 SHCS (#21 - 0.159)



This device is used to mount a Sherline rotary table vertically on a Taig mill.

<b>David Underwood</b>	
<b>Rotary Table Right Angle Base</b>	
Drawn: 2015-03-26	Sheet 1 of 1
Unless otherwise specified, dimensions are in inches.	